

UTILITY OWNERS

- 1) FLORIDA POWER CORPORATION
P.O. BOX 14042
ST. PETERSBURG, FLORIDA 33733
- 2) ORLANDO UTILITIES COMMISSION
P.O. BOX 3193
ORLANDO, FLORIDA

Note: R/W Mks--- These symbols denote the location of underground Permanent R/W Markers (P.R.W.M.). The P.R.W.M. are 5/8" copper-coated rods.

Above ground reference markers are located within 1' of the P.R.W.M., where possible.

The location of the P.R.W.M. were established by field survey in July, 1973, January, 1974. The original field notes are filed in the District Office, State of Florida Department of Transportation, Deland, Florida. Copies of these notes are filed in the office of R/W Engineering, State of Florida Department of Transportation, Tallahassee, Florida.

Filed for record in the Office of the County Comptroller for the County of Orange, State of Florida, in Map Book 3, Pages 108-111, on the 12th day of October, A.D. 1972.

County Comptroller
Orange County, Florida

Filed for Record in the Office of the Clerk of the Circuit Court for the County of Orange, State of Florida, in Map Book 3, Page 16, on the 12th day of September, A.D. 1979.

Clerk of the Circuit Court
Orange County, Florida

BEARINGS ARE BASED ON THE FLORIDA STATE SYSTEM OF PLANE COORDINATES.

Note		M.D.	10-16-82
4	ADDED CONSTRUCTION CONTRACT	J.E.G.	F.J.R. 9-4-73
3	REVISED R/W LINE	J.E.G.	F.J.R. 8-3-72
2	REVISED LAKE SHORE LINE	J.E.G.	W.J.M. 5-24-72
1	REVISED L.A. R/W LINE	J.E.G.	F.J.R. 5-2-72
NO.	REVISION	BY	DATE

STATE OF FLORIDA
DEPARTMENT OF TRANSPORTATION
INTERSTATE 4-BEE LINE CONNECTOR

KEY MAP

W. K. DAUGHERTY / CONSULTING ENGINEERS	
SECTION ENGINEERS	
J. E. GREINER COMPANY	
MADE H.C.G.	DATE 10-15-71
CHECKED	DATE
SCALE 1" = 400'	
Sec. 75004-2502 Sh. 1	

STATE ROAD 528

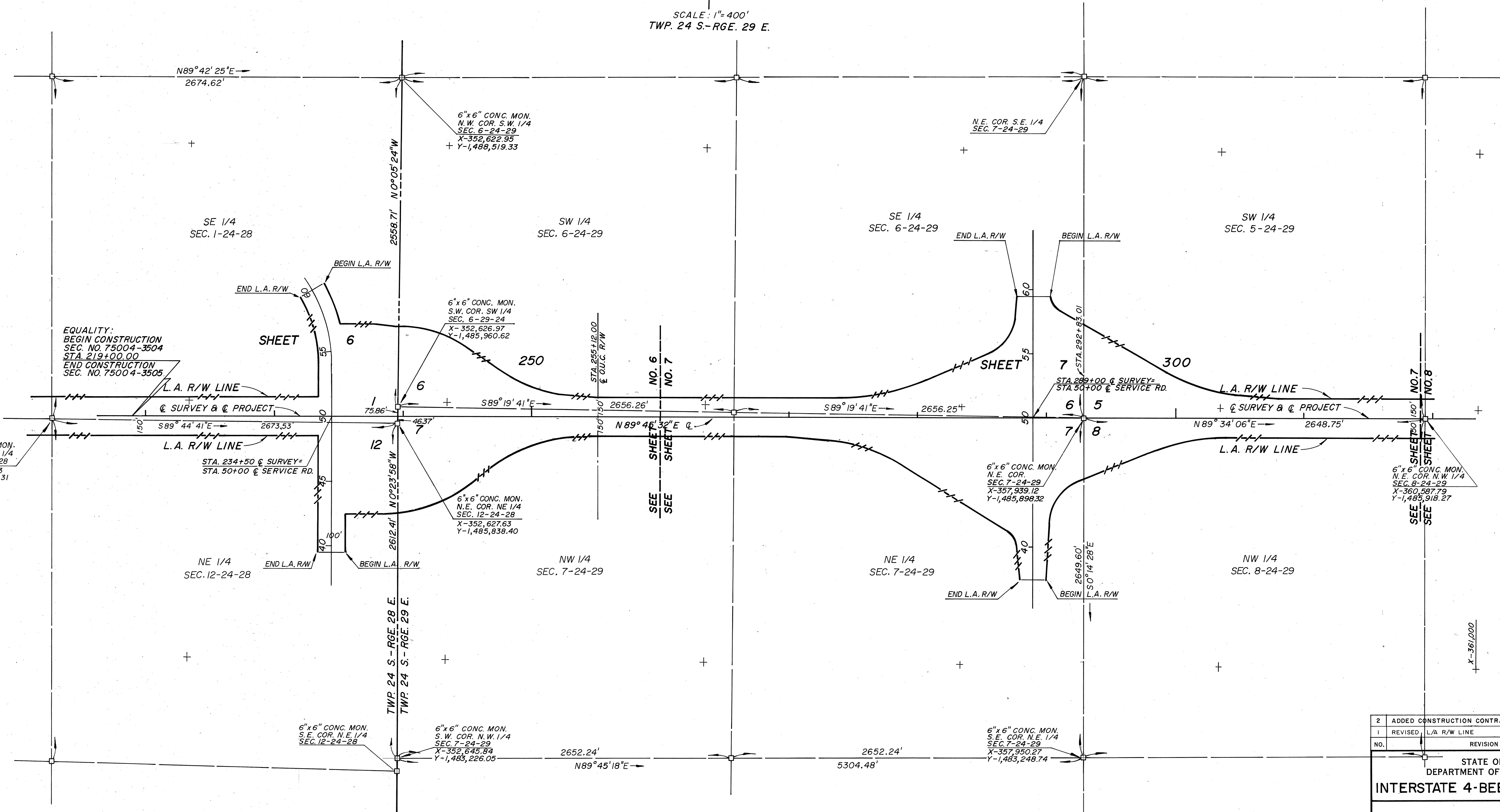
Y-1,490,000

Y-1,488,000

Y-1,486,000

Y-1,484,000

SCALE: 1"=400'
TWP. 24 S.-RGE. 29 E.



2	ADDED CONSTRUCTION CONTRACT	J.E.G.	F.J.R.	9-4-73
1	REVISED L/A R/W LINE	J.E.G.	W.J.M.	6-21-72
NO.	REVISION	BY	DATE	

STATE OF FLORIDA
DEPARTMENT OF TRANSPORTATION
INTERSTATE 4-BEE LINE CONNECTOR

KEY MAP

W. K. DAUGHERTY / CONSULTING ENGINEERS
SECTION ENGINEERS
J. E. GREINER COMPANY
MADE H.C.G. DATE 10-15-71 TRACED DATE
CHECKED DATE SCALE 1"=400'
Sec. 75004-2502 Sh. 2

ORANGE COUNTY, FLORIDA.

SECTION	CONTRACT	INTERSTATE 4 BEE LINE CONNECTOR	SHEET NO.
75004	2502		3 OF 10
By:			Date: 10-71
STATE OF FLORIDA			

STATE ROAD 528

Y-1,491,000

Y-1,489,000

Y-1,487,000

Y-1,485,000

SCALE: 1"=400'
TWP. 23 S. - RGE. 29 E.
TWP. 24 S. - RGE. 29 E.

NORTH 1/2
SEC. 4 TWP. 24 S., RGE. 29 E.

SOUTH 1/2
SEC. 5 TWP. 24 S., RGE. 29 E.

SOUTH 1/2
SEC. 4 TWP. 24 S., RGE. 29 E.

NORTH 1/2
SEC. 8 TWP. 24 S., RGE. 29 E.

Q SURVEY & Q PROJECT
CURVE No. 1
P.I. STA. 358+80.93
Δ=60° 48' 20" LT.
D=2° 00' 00" (Arc Def.)
R=2864.79'
Ls=400'
Os=4° 00' 00"
Ts=1882.28'
L=2640.28'
X=399.81'
Y=9.31'
P=2.33'
K=1.99'
LTs=266.74'
STs=133.40'
T.S. STA. 339+98.65
S.C. STA. 343+98.65
C.S. STA. 370+38.93
S.T. STA. 374+38.93

Q SURVEY & Q PROJECT
CURVE No. 2R
P.I. STA. 399+82.79
Δ=45° 52' 10" RT.
D=1° 03' 30.79" (Arc Def.)
R=2290.26'
L=4333.22'
R=5412.55'
P.C. STA. 376+92.52
P.T. STA. 420+25.75 Bk=
STA. 421+40.26 Ahd.

EQUALITY:
BEGIN CONSTRUCTION
SEC. NO. 75004-3502
STA. 319+00.00
END CONSTRUCTION
SEC. NO. 75004-3504

X=360,556.05
Y=1,485,918.13

6"x6" CONC. MON.
N.W. COR. N.E. 1/4
SEC. 8-24-29
X=360,587.79
Y=1,485,918.27

N.E. COR.
SEC. 8-24-29
X=363,236.87
Y=1,485,929.36

6"x6" CONC. MON.
S.E. COR. N.E. 1/4
SEC. 8-24-29
X=363,240.41
Y=1,483,273.57

6"x6" CONC. MON.
N.E. COR.
SEC. 4-24-29
X=368,531.99
Y=1,491,262.76

Q PROJECT STA. 416+60.08
Q SUNSHINE STATE PARKWAY
STA. 5382+02.90
N 74° 49' 22" E

END R/W PROJECT
SECTION 75004-2502
STA. 427+00.00
BEGIN R/W PROJECT
SECTION 75004-2501

SHEET NO. 9

SHEET NO. 8

N89° 44' 59" E

SEE

SEE

SEE

SEE

SEE

SEE

SEE

SEE

SEE

SEE

SEE

SEE

SEE

SEE

SEE

SEE

SEE

SEE

SEE

SEE

SEE

SEE

SEE

SEE

SEE

SEE

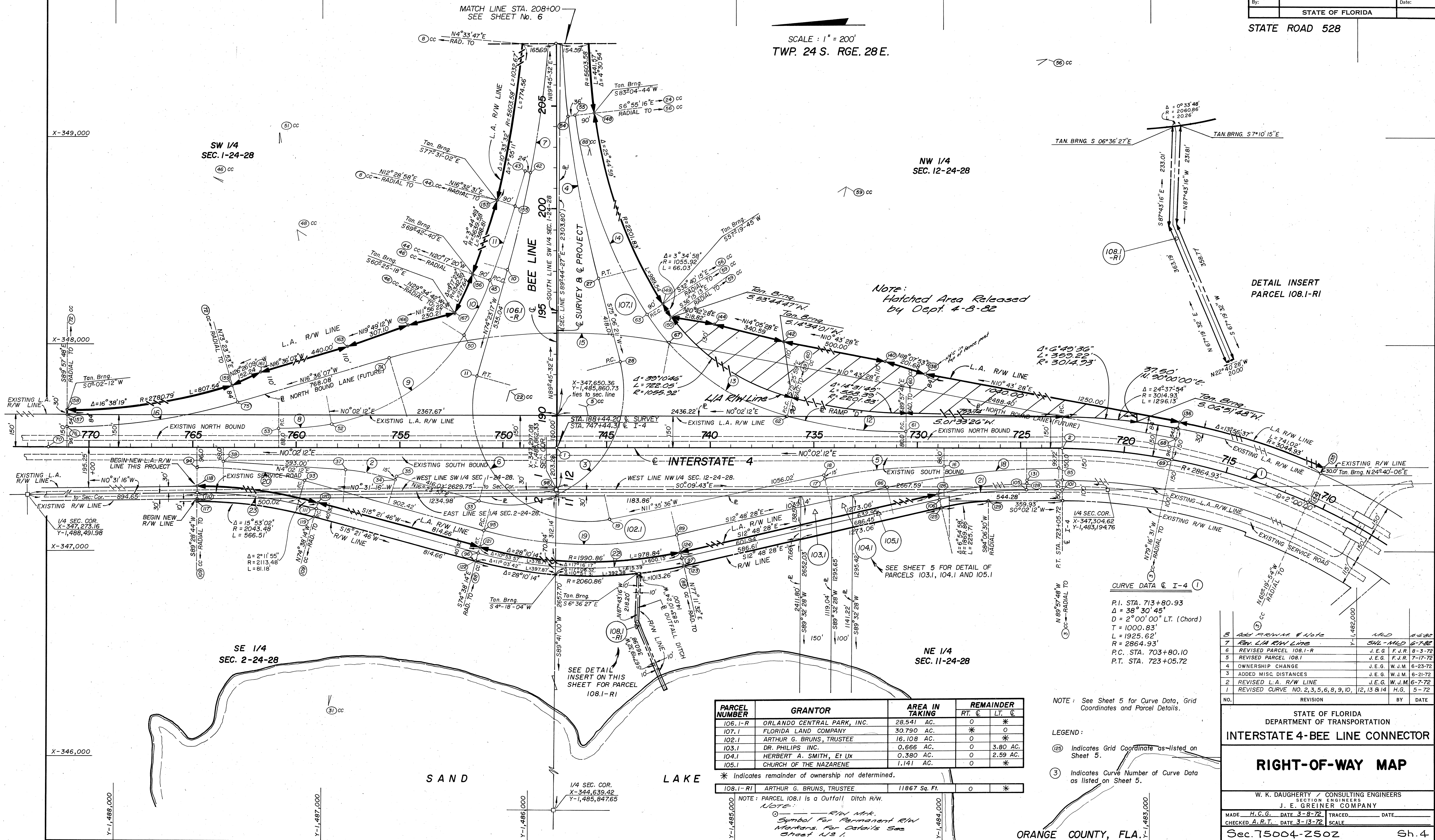
2	ADDED JOHN YOUNG PARKWAY	AMB	9-13-04
1	ADDED CONSTRUCTION CONTRACT	J.E.G.	F.J.R. 9-4-73

NO.	REVISION	BY	DATE

STATE OF FLORIDA DEPARTMENT OF TRANSPORTATION INTERSTATE 4-BEE LINE CONNECTOR			
KEY MAP			
W. K. DAUGHERTY / CONSULTING ENGINEERS SECTION ENGINEERS J. E. GREINER COMPANY			
MADE H.C.G.	DATE 10-15-71	TRACED	DATE
CHECKED	DATE	SCALE 1"=400'	
Sec. 75004-2502			Sh. 3

ORANGE COUNTY, FLORIDA.

STATE ROAD 528

SCALE: 1" = 200'
TWP. 24 S. RGE. 28 E.

STATE ROAD 528

RAMP COORDINATE CONTROL						
BASE LINE	C.V. NO.	CONTROL POINT	STATION	COORDINATES		NO.
				X	Y	
I-4	1	CENTER	—	344,633.873	1,483,426.436	3
I-4	1	P.I.	713+80.93	347,498.162	1,482,423.774	
I-4	1	P.C.	703+80.10	346,874.521	1,481,641.130	
I-4	1	P.T.	723+05.72	347,498.802	1,483,424.602	2
RAMP "A"	2	CENTER	—	346,248.579	1,486,966.481	
RAMP "A"	2	P.I.	575+23.32	347,382.915	1,486,762.016	
RAMP "A"	2	P.C.	573+99.21	347,391.651	1,486,885.814	37
RAMP "A"	2	P.T.	576+46.46	347,347.876	1,486,642.956	34
RAMP "A"	3	CENTER	—	347,772.434	1,486,084.338	
RAMP "A"	3	P.I.	590+40.44	346,968.705	1,485,301.449	
RAMP "A"	3	P.C.	580+62.49	347,244.810	1,486,239.619	33
RAMP "A"	3	P.T.	592+26.82	347,913.804	1,485,552.818	28
RAMP "A"	4	CENTER	—	349,790.536	1,480,123.202	
RAMP "A"	4	P.I.	603+81.57	349,029.753	1,485,849.627	
RAMP "A"	4	P.C.	596+44.89	348,317.828	1,485,660.276	27
RAMP "A"	4	P.T.	611 +10.20	349,766.425	1,485,852.728	26
RAMP "B"	5	CENTER	—	344,548.378	1,483,995.273	
RAMP "B"	5	P.I.	466+78.09	347,413.352	1,484,285.194	
RAMP "B"	5	P.C.	463+86.34	347,413.166	1,483,993.440	16
RAMP "B"	5	P.T.	469+67.84	347,354.720	1,484,570.995	17
RAMP "B"	6	CENTER	—	347,695.971	1,485,719.014	5
RAMP "B"	6	P.I.	489+25.00	346,976.094	1,486,491.239	
RAMP "B"	6	P.C.	480+23.86	347,157.192	1,485,608.483	19
RAMP "B"	6	P.T.	491 +48.95	347,843.988	1,486,248.722	11
RAMP "B"	7	CENTER	—	349,901.242	1,491,622.923	
RAMP "B"	7	P.I.	504+81.74	349,127.608	1,485,890.040	
RAMP "B"	7	P.C.	496+83.99	348,359.286	1,486,104.733	10
RAMP "B"	7	P.T.	512+69.30	349,925.353	1,485,893.396	20
RAMP "C"	8	CENTER	—	349,021.619	1,487,209.246	
RAMP "C"	8	P.I.	29+99.46	347,589.141	1,487,079.073	
RAMP "C"	8	P.C.	28+68.37	347,589.225	1,487,210.162	53
RAMP "C"	8	P.C.C.	31 +29.82	347,612.853	1,486,950.146	52
RAMP "C"	9	CENTER	—	348,552.030	1,487,122.879	
RAMP "C"	9	P.I.	35 +49.91	347,688.842	1,486,536.986	
RAMP "C"	9	P.C.C.	31 +29.82	347,612.853	1,486,950.146	52
RAMP "C"	9	P.C.C.	39+21.33	348,044.754	1,486,313.829	50
RAMP "C"	10	CENTER	—	348,805.668	1,487,527.403	
RAMP "C"	10	P.I.	40+69.34	348,170.152	1,486,235.204	
RAMP "C"	10	P.C.C.	39+21.33	348,044.754	1,486,313.829	50
RAMP "C"	10	P.C.C.	42+16.30	348,308.980	1,486,183.881	45
RAMP "C"	11	CENTER	—	350,295.732	1,491,557.974	
RAMP "C"	11	P.I.	44+91.51	348,567.117	1,486,088.449	
RAMP "C"	11	P.C.C.	42 +16.30	348,308.980	1,486,183.881	45
RAMP "C"	11	P.T.	47+66.30	348,833.210	1,486,018.200	43
RAMP "D"	12	CENTER	—	349,871.115	1,484,176.562	
RAMP "D"	12	P.I.	73+51.37	347,579.471	1,484,470.202	
RAMP "D"	12	P.C.	70+59.20	347,579.284	1,484,178.028	61
RAMP "D"	12	P.C.C.	76+40.41	347,652.956	1,484,752.983	62
RAMP "D"	13	CENTER	—	348,762.035	1,484,464.773	
RAMP "D"	13	P.I.	80+89.05	347,765.794	1,485,187.202	
RAMP "D"	13	P.C.C.	76+40.41	347,652.956	1,484,752.983	61
RAMP "D"	13	P.C.C.	84+95.65	348,143.454	1,485,429.386	63
RAMP "D"	14	CENTER	—	349,380.616	1,483,500.159	
RAMP "D"	14	P.I.	90+19.49	348,584.419	1,485,712.164	
RAMP "D"	14	P.C.C.	84+95.65	348,143.454	1,485,429.386	63
RAMP "D"	14	P.T.	95+25.64	349,104.444	1,485,775.289	55
N.B.L.	15	CENTER	—	345,191.394	1,485,853.476	
N.B.L.	15	P.I.	849+56.11	348,135.738	1,486,004.626	
N.B.L.	15	P.C.	842+59.70	348,006.145	1,485,320.376	67
N.B.L.	15	P.T.	856+26.02	347,936.757	1,486,672.009	74
N.B.L.	16	CENTER	—	350,462.665	1,488,226.598	
N.B.L.	16	P.I.	868+13.00	347,597.608	1,487,809.517	
N.B.L.	16	P.C.	863+94.09	347,717.302	1,487,408.065	75
N.B.L.	16	P.T.	872+26.02	347,597.876	1,488,228.431	76
S.B.L.	17	CENTER	—	344,633.873	1,483,426.436	
S.B.L.	17	P.I.	323+12.35	347,402.806	1,483,431.257	
S.B.L.	17	P.C.C.	323+05.72	347,402.802	1,483,424.664	168
S.B.L.	17	P.C.C.	323+18.98	347,402.778	1,483,437.923	85
S.B.L.	18	CENTER	—	343,583.093	1,483,422.077	
S.B.L.	18	P.I.	327+39.67	347,401.033	1,483,858.611	
S.B.L.	18	P.C.C.	323+18.98	347,402.778	1,483,437.923	85
S.B.L.	18	P.T.	331+56.98	347,307.774	1,484,268.834	86
S.B.L.	19	CENTER	—	348,939.757	1,485,705.502	88
S.B.L.	19	P.I.	346+75.32	346,971.186	1,485,749.404	
S.B.L.	19	P.C.	341+96.12	347,077.416	1,485,282.123	89

RAMP COORDINATE CONTROL						
BASE LINE	C.V. NO.	CONTROL POINT	STATION	COORDINATES		NO.
				X	Y	
S.B.L.	19	P.T.	351+35.14	347,098.142	1,486,211.483	95
S.B.L.	20	CENTER	—	345,495.606	1,487,587.637	
S.B.L.	20	P.I.	362+94.53	347,405.301	1,487,329.444	
S.B.L.	20	P.C.	360+37.56	347,337.221	1,487,081.654	93
S.B.L.	20	P.T.	365+48.43	347,405.465	1,487,586.415	94
SERVICE RD.	21	CENTER	—	345,389.050	1,483,592.755	
SERVICE RD.	21	P.I.	226+87.49	347,299.046	1,483,806.508	
SERVICE RD.	21	P.C.	224+72.52	347,298.909	1,483,591.533	105
SERVICE RD.	21	P.T.	229+00.67	347,251.391	1,484,016.134	106
SERVICE RD.	22	CENTER	—	348,939.757	1,485,705.502	88
SERVICE RD.	22	P.I.	246+80.78	346,856.774	1,485,751.954	
SERVICE RD.	22	P.C.	241+73.73	346,969.178	1,485,257.517	97
SERVICE RD.	22	P.T.	251+67.33	346,991.109	1,486,240.891	96
SERVICE RD.	23	CENTER	—	345,197.905	1,487,578.424	
SERVICE RD.	23	P.I.	262+72.65	347,283.945	1,487,306.723	
SERVICE RD.	23	P.C.	259+81.99	347,206.939	1,487,026.444	111
SERVICE RD.	23	P.T.	265+59.59	347,281.301	1,487,597.375	110

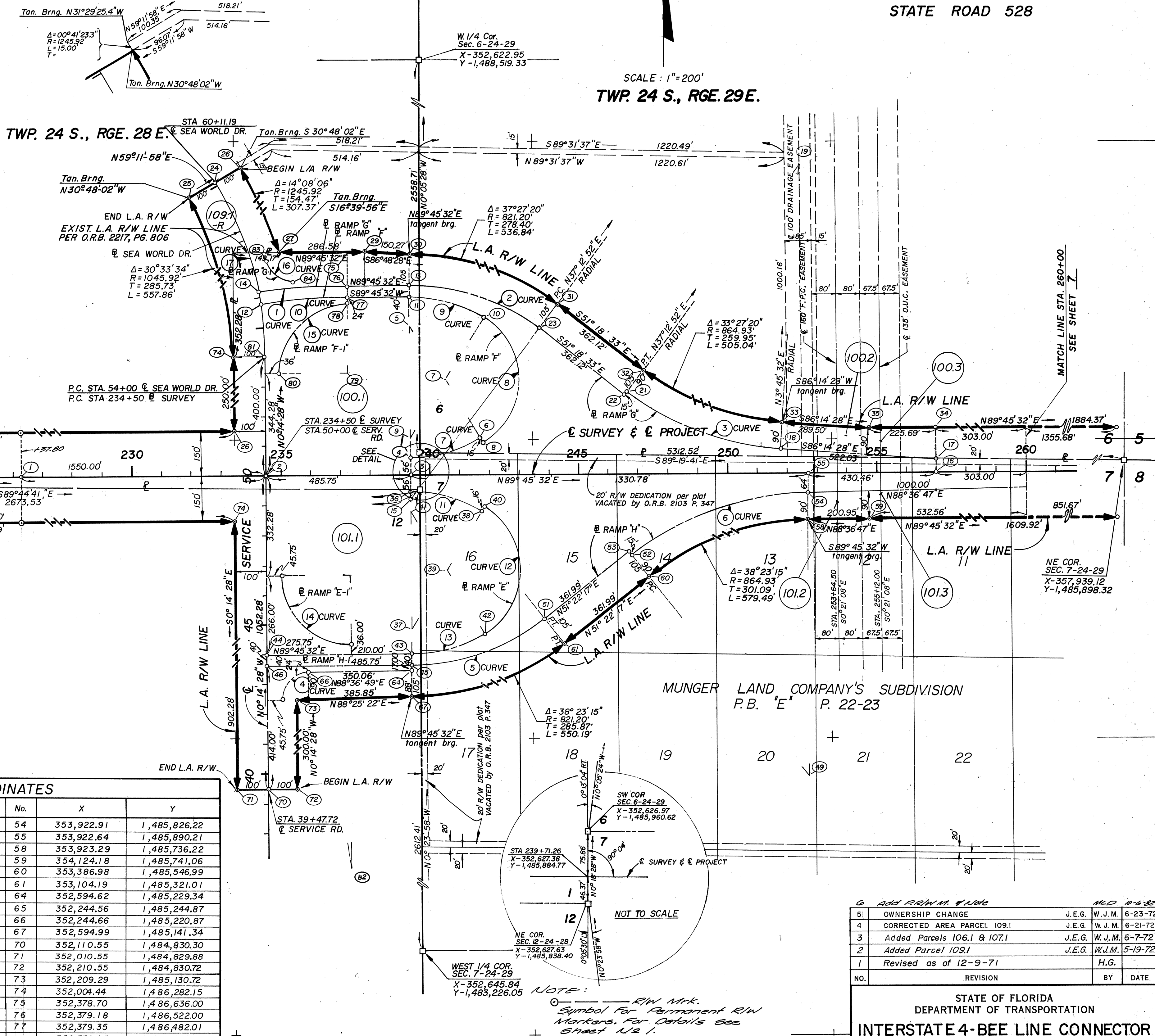
RIGHT-OF-WAY AND LIMITED ACCESS
RIGHT-OF-WAY COORDINATE CONTROL

COORDINATES			NO.
X	Y		
347,500.363	1,485,863.191		1
349,901.242	1,491,622.923		8
344,548.378	1,483,995.273		14
347,369.414	1,484,574.008		18
347,772.434	1,486,084.338		22
349,790.536	1,480,123.202		24
346,248.579	1,486,966.481		31
347,362.265	1,486,638.722		35
347,433.396	1,487,477.347		38
348,828.718	1,485,994.625		42
350,295.733	1,491,557.974		44
348,805.668	1,487,527.403		46
348,552.030	1,487,122.879		48
349,021.619	1,487,209.246		51
349,100.107	1,485,811.027		54
349,380.616	1,483,500.159		56
348,762.035	1,484,464.773		59
349,871.115	1,484,176.562		60
345,191.394	1,485,853.476		65
347,543.085	1,482,875.446		68
347,448.762	1,482,893.310		69
347,501.934	1,488,318.880		70
350,462.665	1,488,226.598		72
343,584.461	1,483,372.666		84
345,495.601	1,487,579.259		91
347,297.084	1,485,862.334		98
347,501.806	1,488,118.881		99
347,276.556	1,488,119.025		100
345,388.943	1,483,425.952		102
345,389.018	1,483,542.385		104
345,197.978	1,487,570.354		109
347,298.802	1,483,424.363		112
347,280.313	1,487,706.100		113
347,241.376	1,487,588.941		117
347,168.408	1,487,028.847		119
347,235.905	1,487,010.298		120
346,952.449	1,486,243.019		121
347,019.947	1,486,224.470		122
346,926.942	1,485,253.954		123
346,995.305	1,485,268.999		124
347,215.175	1,483,944.288		125
347,248.877	1,483,541.195		127
347,328.876	1,483,541.145		128
347,249.000	1,483,734.317		129
347,237.352	1,482,230.744		134
347,400.925	1,482,155.618		135
347,625.618	1,482,859.814		136
347,858.226	1,484,087.981		138
347,920.990	1,484,279.649		140
348,014.033	1,484,770.915		142
348,096.953	1,485,101.254		144
Continued			

CURVE DATA											
CURVE	RAMP	P. I. STA.	Δ	Dc (arc. def.)	T	L	R	P. C. STA.	P.C. STA.	P. T. STA.	ℓ
1	"I-4"	713+80.93	38° 30' 45" LT.	2° 00' 00"	1000.83'	1925.62'	2864.93'	703+80.10		723+05.72	.052' / FT.
2	"A"	575+23.32	12° 21' 45" RT.	5° 00' 00"	124.11'	247.25'	1145.92'	573+99.21		576+46.46	.073' / FT.
3	"A"	590+40.44	121° 17' 36" LT.	10° 25' 03"	977.95'	1164.33'	550.00'	590+62.49		592+26.82	.100' / FT.
4	"A"	603+81.57	14° 39' 11" RT.	1° 00' 00"	736.68'	1465.31'	5729.58'	596+44.89		611+10.20	.039' / FT.
5	"B"	466+78.09	11° 37' 48" LT.	2° 00' 00"	291.75'	581.50'	2864.79'	463+86.34		469+67.84	.042' / FT.
6	"B"	489+25.00	117° 12' 19" RT.	10° 25' 03"	901.14'	1125.09'	550.00'	480+23.84		491+48.95	.100' / FT.
7	"B"	504+81.74	15° 51' 11" LT.	1° 00' 00"	797.75'	1585.31'	5729.58'	496+83.99		512+69.30	.039' / FT.
8	"C"	29+99.46	10° 27' 29" LT.	4° 00' 00"	131.09'	261.45'	1432.39'	28+68.37	31+29.82		.073' / FT.
9	"C"	35+49.91	47° 29' 27" LT.	6° 00' 00"	420.09'	791.51'	954.93'	31+29.82	38+21.33		.092' / FT.
10	"C"	40+69.34	11° 47' 56" LT.	4° 00' 00"	148.01'	294.97'	1432.39'	39+21.33	42+16.30		.073' / FT.
11	"C"	44+91.51	5° 30' 00" LT.	1° 00' 00"	275.21'	550.00'	5729.58'	42+16.30		47+66.30	.039' / FT.
12	"D"	73+51.37	14° 31' 49" RT.	2° 30' 00"	292.17'	581.21'	2291.83'	70+59.20		76+40.41	.051' / FT.
13	"D"	80+89.05	42° 45' 44" RT.	5° 00' 00"	448.64'	855.24'	1145.92'		76+40.41	84+95.65	.084' / FT.
14	"D"	90+19.49	25° 45' 00" RT.	2° 30' 00"	523.84'	1029.99'	2291.83'		84+95.65	95+25.64	.051' / FT.
15	"N.B.L"	849+56.11	27° 19' 35" LT.	2° 00' 00"	696.41'	1366.32'	2864.79'	842+59.70		856+26.02	.074' / FT.
16	"N.B.L"	868+13.00	16° 38' 19" RT.	2° 00' 00"	418.91'	831.93'	2864.79'	863+94.09		872+26.02	.074' / FT.
17	"S.B.L"	323+12.35	0° 16' 28" LT.	2° 04' 09"	6.63'	13.26'	2768.93'		323+05.72	323+18.98	.052' / FT.
18	"S.B.L"	327+39.67	12° 34' 12" LT.	1° 30' 00"	420.69'	838.00'	3819.72'		323+18.98	331+56.98	.058' / FT.
19	"S.B.L"	346+75.32	28° 10' 34" RT.	3° 00' 00"	479.20'	939.02'	1909.86'	341+96.12		351+35.14	.094' / FT.
20	"S.B.L"	362+94.53	15° 19' 34" LT.	3° 00' 00"	256.97'	510.87'	1909.86'	360+37.56		365+48.43	.094' / FT.
21	SERV RD.	226+87.49	12° 50' 40" LT.	3° 00' 00"	214.97'	428.15'	1909.86'	224+72.52		229+00.67	.040' / FT.
22	SERV RD.	246+80.78	28° 10' 14" RT.	2° 50' 07"	507.05'	993.60'	2020.86'	241+73.73		251+67.33	.037' / FT.
23	SERV RD.	262+72.65	15° 53' 02" LT.	2° 45' 00"	290.66'	577.60'	2083.48'	259+81.99		265+59.59	.037' / FT.

STATE ROAD 528

RAMP CURVE DATA									
CURVE	RAMP	P.I. STA.	Δ	Dc (arc def.)	T	L	R	P.C. STA.	P.T. STA.
1	"G"	84 + 31.34	8° 44' 18" LT.	2° 56' 18"	148.98'	297.37'	1949.86'	82 + 82.36	85 + 79.73
2	"G"	90 + 34.78	37° 45' 36" RT.	8° 00' 00"	245.05'	472.21'	716.20'	87 + 89.73	92 + 61.94
3	"G"	99 + 13.90	33° 46' 36" LT.	6° 00' 00"	289.92'	562.95'	954.93'	96 + 23.98	101 + 86.93
4	"H-I"	213 + 83.54	90° 00' 00" RT.	63° 39' 43"	90.00'	141.37'	90.00'	212 + 93.54	214 + 34.91
5	"H"	120 + 34.23	38° 23' 15" LT.	8° 00' 00"	249.32'	479.85'	716.20'	117 + 84.91	122 + 64.76
6	"H"	129 + 59.17	38° 23' 15" RT.	6° 00' 00"	332.42'	639.79'	954.93'	126 + 26.75	132 + 66.54
7	"F"	60 + 63.92	31° 08' 21" LT.	12° 27' 20"	128.17'	250.00'	460.00'	59 + 35.75	61 + 85.75
8	"F"	65 + 92.92	117° 43' 18" RT.	21° 15' 30"	407.17'	505.44'	246.00'	61 + 85.75	66 + 91.19
9	"F"	68 + 23.82	31° 08' 21" LT.	10° 59' 11"	132.63'	258.70'	476.00'	66 + 91.19	69 + 49.89
10	"F"	73 + 05.42	8° 42' 54" LT.	3° 00' 00"	145.53'	290.50'	1909.86'	71 + 59.89	74 + 50.39
11	"E"	10 + 63.92	31° 08' 21" RT.	12° 27' 20"	128.17'	250.00'	460.00'	9 + 75.35	11 + 85.75
12	"E"	15 + 92.92	117° 43' 18" RT.	21° 15' 30"	407.17'	505.44'	246.00'	11 + 85.75	16 + 91.19
13	"E"	18 + 23.82	31° 08' 21" RT.	10° 59' 11"	132.63'	258.70'	476.00'	16 + 91.19	19 + 49.89
14	"E-I"	233 + 89.89	90° 00' 00" RT.	22° 44' 14"	230.00'	361.38'	230.00'	221 + 59.89	225 + 21.17
15	"F-I"	173 + 89.89	90° 00' 00" LT.	24° 54' 40"	230.00'	361.38'	230.00'	171 + 59.89	175 + 21.17
16	"G-I"	183 + 52.79	79° 38' 18" LT.	63° 39' 43"	75.04'	125.10'	90.00'	182 + 77.75	184 + 02.85
17	SEA WORLD DR	57 + 13.05	30° 33' 34" LT.	5° 00' 00"	313.05'	611.19'	1145.92'	54 + 00.00	60 + 11.19



GRID COORDINATES					
No.	X	Y	No.	X	Y
1	351,290.00	1,485,879.14	18	353,843.97	1,485,970.30
2	352,106.12	1,485,882.57	19	353,906.57	1,486,923.12
3	352,591.87	1,485,884.62	21	353,324.77	1,486,165.94
4	352,591.63	1,485,940.61	22	353,308.00	1,486,150.69
5	352,589.70	1,486,400.61	23	353,028.54	1,486,374.62
6	352,829.22	1,486,007.90	24	351,942.82	1,486,864.51
7	352,709.46	1,486,204.25	25	351,856.93	1,486,813.31
8	352,837.56	1,485,994.24	26	352,028.72	1,486,915.72
9	352,591.35	1,486,006.90	27	352,152.12	1,486,635.05
10	352,835.78	1,486,415.34	29	352,438.70	1,486,636.26
11	352,589.35	1,486,482.89	30	352,588.74	1,486,627.89
12	352,090.07	1,486,458.74	31	353,088.86	1,486,460.68
13	352,589.18	1,486,522.89	32	353,371.50	1,486,234.31
14	352,083.06	1,486,498.13	33	353,837.91	1,486,060.05
15	352,592.19	1,485,806.70	34	354,352.47	1,486,042.02
16	354,353.10	1,485,892.03	35	354,126.79	1,486,041.08
17	354,352.92	1,485,936.03	36	352,592.10	1,485,828.62

GRID COORDINATES					
No.	X	Y	No.	X	Y
37	352,594.04	1,485,368.62	54	353,922.91	1,485,826.22
38	352,830.25	1,485,763.34	55	353,922.64	1,485,890.21
39	352,712.15	1,485,565.98	58	353,923.29	1,485,736.22
40	352,838.47	1,485,777.07	59	354,124.18	1,485,741.06
41	352,592.38	1,485,762.34	60	353,386.98	1,485,546.99
42	352,840.24	1,485,355.96	61	353,104.19	1,485,321.01
43	352,594.38	1,485,286.34	64	352,594.62	1,485,229.34
44	352,108.64	1,485,284.30	65	352,244.56	1,485,244.87
45	352,594.55	1,485,246.34	66	352,244.66	1,485,220.87
46	352,108.81	1,485,244.30	67	352,594.99	1,485,141.34
47	352,591.54	1,485,962.54	70	352,110.55	1,484,830.30
49	353,926.93	1,484,871.29	71	352,010.55	1,484,828.88
50	353,644.14	1,484,645.32	72	352,210.55	1,484,830.72
51	353,038.64	1,485,403.03	73	352,209.29	1,485,130.72
52	353,330.79	1,485,617.29	74	352,004.44	1,486,282.15
53	353,321.43	1,485,629.01	75	352,378.70	1,486,636.00
			76	352,379.18	1,486,522.00
			77	352,379.35	1,486,482.01
			78	352,379.45	1,486,458.01
			79	352,380.42	1,486,228.01
			80	352,150.42	1,486,227.04
			81	352,104.44	1,486,282.57
			82	352,387.39	1,484,572.16
			83	352,105.17	1,408,602.23
			84	352,200.30	1,486,537.14

GRID COORDINATES FROM I-4 INTERCHANGE, SHEETS 3 AND 4

8	349,901.24	1,491,622.92	55	349,104.44	1,485,775.29
20	349,925.35	1,485,893.40	56	349,380.62	1,483,500.16
26	349,766.42	1,485,852.73	147	349,555.28	1,485,721.84
24	349,790.54	1,480,123.20	148	349,115.29	1,485,585.95
54	349,100.11	1,485,811.03			

PARCEL NUMBER	GRANTOR	AREA IN TAKING	REMAINDER
100.1	MARTIN MARIETTA CORPORATION	160.66 AC.	* 0
101.1	FLORIDA LAND COMPANY	102.28 AC.	* 0
109.1-R	ORLANDO CENTRAL PARK, INC.	1.32 AC.	0 *
106.1-R	ORLANDO CENTRAL PARK, INC.	28.54 AC.	0 *
107.1	FLORIDA LAND COMPANY	30.79 AC.	* 0

* Indicates Remainder not shown when ownership encompasses area too large to be shown on this scale.

ORANGE COUNTY, FLA.

5	OWNERSHIP CHANGE	J.E.G.	W.J.M.	6-23-72
4	CORRECTED AREA PARCEL 109.1	J.E.G.	W.J.M.	6-21-72
3	Added Parcels 106.1 & 107.1	J.E.G.	W.J.M.	6-7-72
2	Added Parcel 109.1	J.E.G.	W.J.M.	5-19-72
1	Revised as of 12-9-71	H.G.		

STATE OF FLORIDA
DEPARTMENT OF TRANSPORTATION
INTERSTATE 4-BEE LINE CONNECTOR

RIGHT-OF-WAY MAP

W. K. DAUGHERTY / CONSULTING ENGINEERS
J. E. GREINER COMPANY

MADE H.C.G. DATE 11-5-71 TRACED DATE
CHECKED A.R.T. DATE 11-10-71 SCALE 1" = 200'
Sec. 75004-2502 Sh. 6

GRID COORDINATES					
No.	X	Y	No.	X	Y
9	368,529.52	1,490,296.01	24	374,164.10	1,495,470.61
12	368,232.52	1,490,344.88	28	370,460.82	1,490,833.53
13	368,447.11	1,490,106.58	88	370,307.06	1,485,183.56
14	368,540.57	1,490,299.84	109	365,702.17	1,487,731.19
22	368,750.72	1,490,367.63	110	365,570.91	1,487,803.81
23	368,890.00	1,490,407.42	128	365,439.66	1,487,876.42

LEGEND	
POWER POLE	---○---
TELEPHONE POLE	---○---
COMBINATION POLE	---○---
LIGHT STANDARD	---○---
BUY WIRE & ANCHOR PIN	---○---
BURIED ELECTRIC POWER CABLE	---(E)---
ELECTRIC DUCT	---(E)---
BURIED TELEPHONE CABLE	---(T)---
TELEPHONE DUCT	---(T)---
WATER MAIN	---(W)---
GAS MAIN	---(G)---
DIP POT	---○---
VALVE	---○---
FIRE HYDRANT	---○---
AIR VALVE	---○---
BLOW-OFF	---○---
SANITARY SEWER	---(S)---
STORM SEWER	---(S)---
MANHOLE	---○---
STREET NAME FROM PLAT	---(S)---
PUBLIC RECORDS ORANGE COUNTY FLA.	---(P)---
PROPERTY LINE	---(P)---
IRON PIPE	---(I)---
IRON ROD	---(I)---
CONCRETE MONUMENT	---(C)---
FIELD DIMENSION	---(F)---
DEED DIMENSION	---(D)---
CALCULATED DIMENSION	---(C)---

LEGEND	
10	Indicates Curve number
88	Indicates Coordinate number
100.1	Indicates conc. mon. Section or 1/4 Section corner.
100.1	Indicates Parcel Number

CURVE No. 2 DATA AT
E. OF PROJECT
P.I. STA. 399+82.79
 $\Delta = 45^\circ 52' 10''$ RT.
 $D_c = 1^\circ 03' 30.79''$
 $R = 5412.65'$
 $T = 2290.26'$
 $L = 4333.22'$
P.C. STA. 376+92.53
P.T. STA. 420+25.75 BK.
STA. 421+40.26 AHD.

PARCEL NUMBER	GRANTOR	AREA IN TAKING	REMAINDER	
			RT. E.	LT. E.
100.1	MARTIN MARIETTA CORPORATION	160.66 AC.	*	*
101.1	FLORIDA LAND COMPANY	102.28 AC.	*	0

* Indicates Remainder not shown when ownership encompasses area too large to be shown at this scale.

Added P.R.M.S.	T.L.	11-9-71
P.R.M.S. & Note	L.M.	9-13-71
2 Revised Acreage Parcel 100.1	J.E.G.	W.J.M. 5-19-72
1 Revised as of 12-9-71	H.G.	

NO.	REVISION	BY	DATE
-----	----------	----	------

STATE OF FLORIDA
DEPARTMENT OF TRANSPORTATION
INTERSTATE 4-BEE LINE CONNECTOR

RIGHT-OF-WAY MAP

W. K. DAUGHERTY / CONSULTING ENGINEERS			
SECTION ENGINEERS			
J. E. GREINER COMPANY			
MADE H.C.G.	DATE 10-13-71	TRACED	DATE
CHECKED A.R.T.	DATE 10-22-71	SCALE 1" = 200'	
Sec. 75004-2502			Sh. 9

ORANGE COUNTY, FLORIDA.

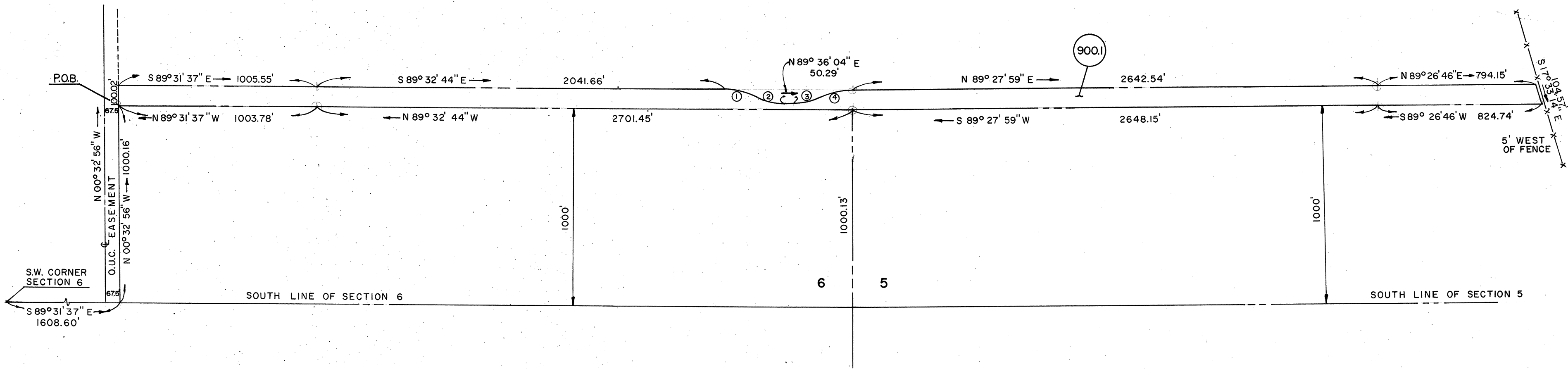
DESCRIPTION
BORROW PIT NO. 1

FROM THE SOUTHWEST CORNER OF SECTION 6, TOWNSHIP 24 SOUTH, RANGE 29 EAST, RUN SOUTH 89 DEGREES 31 MINUTES 37 SECONDS EAST 1608.60 FEET ALONG THE SOUTH BOUNDARY OF THE SOUTHWEST 1/4 OF SAID SECTION 6 TO A POINT ON THE EAST RIGHT OF WAY LINE OF THE ORLANDO UTILITIES COMMISSION TRANSMISSION LINE EASEMENT; THENCE NORTH 00 DEGREES 32 MINUTES 56 SECONDS WEST 1000.16 FEET ALONG THE SAID EAST RIGHT OF WAY LINE FOR THE POINT OF BEGINNING; THENCE CONTINUE NORTH 00 DEGREES 32 MINUTES 56 SECONDS WEST 100.02 FEET; THENCE SOUTH 89 DEGREES 31 MINUTES 37 SECONDS EAST 1005.55 FEET ALONG A LINE PARALLEL WITH THE AFORESAID SOUTH BOUNDARY OF THE SOUTHWEST 1/4; THENCE SOUTH 89 DEGREES 32 MINUTES 44 SECONDS EAST 2041.66 FEET ALONG A LINE PARALLEL WITH THE SOUTH BOUNDARY OF THE SOUTHWEST 1/4 OF SAID SECTION 6 TO THE BEGINNING OF A CURVE, CONCAVE SOUTHWESTERLY, HAVING A RADIUS OF 400.00 FEET AND AN INTERSECTION ANGLE OF 26 DEGREES 21 MINUTES 55 SECONDS; RUN THENCE SOUTHEASTERLY 184.06 FEET ALONG THE ARC OF SAID CURVE TO THE BEGINNING OF A REVERSE CURVE, CONCAVE NORTHEASTERLY, HAVING A RADIUS OF 300.00 FEET AND AN INTERSECTION ANGLE OF 27 DEGREES 13 MINUTES 07 SECONDS; RUN THENCE SOUTHEASTERLY 142.52 FEET ALONG THE ARC OF SAID CURVE TO THE END OF SAID CURVE; THENCE NORTH 89 DEGREES 36 MINUTES 04 SECONDS EAST 50.29 FEET TO THE BEGINNING OF A CURVE, CONCAVE NORTHWESTERLY, HAVING A RADIUS OF 300.00 FEET AND AN INTERSECTION ANGLE OF 25 DEGREES 22 MINUTES 31 SECONDS; RUN THENCE NORTHWESTERLY 177.15 FEET ALONG THE ARC OF SAID CURVE TO THE BEGINNING OF A REVERSE CURVE, CONCAVE SOUTHEASTERLY, HAVING A RADIUS OF 400.00 FEET AND AN INTERSECTION ANGLE OF 25 DEGREES 22 MINUTES 31 SECONDS; RUN THENCE SOUTHEASTERLY 177.15 FEET ALONG THE ARC OF SAID CURVE TO THE END OF SAID CURVE; THENCE SOUTH 89 DEGREES 36 MINUTES 04 SECONDS WEST 50.29 FEET TO THE BEGINNING OF A CURVE, CONCAVE NORTHEASTERLY, HAVING A RADIUS OF 400.00 FEET AND AN INTERSECTION ANGLE OF 27 DEGREES 13 MINUTES 07 SECONDS; RUN THENCE SOUTHEASTERLY 142.52 FEET ALONG THE ARC OF SAID CURVE TO THE END OF SAID CURVE; THENCE NORTH 89 DEGREES 31 MINUTES 37 SECONDS EAST 1005.55 FEET ALONG A LINE PARALLEL WITH THE SOUTH BOUNDARY OF THE SOUTHWEST 1/4 OF SECTION 5, TOWNSHIP 24 SOUTH, RANGE 29 EAST; THENCE NORTH 89 DEGREES 26 MINUTES 46 SECONDS EAST 794.15 FEET ALONG A LINE PARALLEL WITH THE SOUTH BOUNDARY OF THE SOUTHWEST 1/4 OF SAID SECTION 5; THENCE SOUTH 17 DEGREES 33 MINUTES 14 SECONDS EAST 104.57 FEET; THENCE SOUTH 89 DEGREES 26 MINUTES 46 SECONDS WEST 824.74 FEET; THENCE SOUTH 89 DEGREES 27 MINUTES 59 SECONDS WEST 2648.15 FEET; THENCE NORTH 89 DEGREES 32 MINUTES 44 SECONDS WEST 2701.45 FEET; THENCE NORTH 89 DEGREES 31 MINUTES 37 SECONDS WEST 1003.78 FEET TO THE POINT OF BEGINNING.

CONTAINING: 15.8661 ACRES.
GRANTOR: MARTIN MARIETTA CORPORATION

TWP 24 S.
RG. 29 E.

SCALE 1"=400'



CURVE NO.	RADIUS	DELTA	ARC	TANGENT
1	400.00'	26°21'55"	184.06'	93.69'
2	300.00'	27°13'07"	142.52'	72.63'
3	300.00'	25°22'31"	132.86'	67.54'
4	400.00'	25°14'26"	176.21'	89.56'

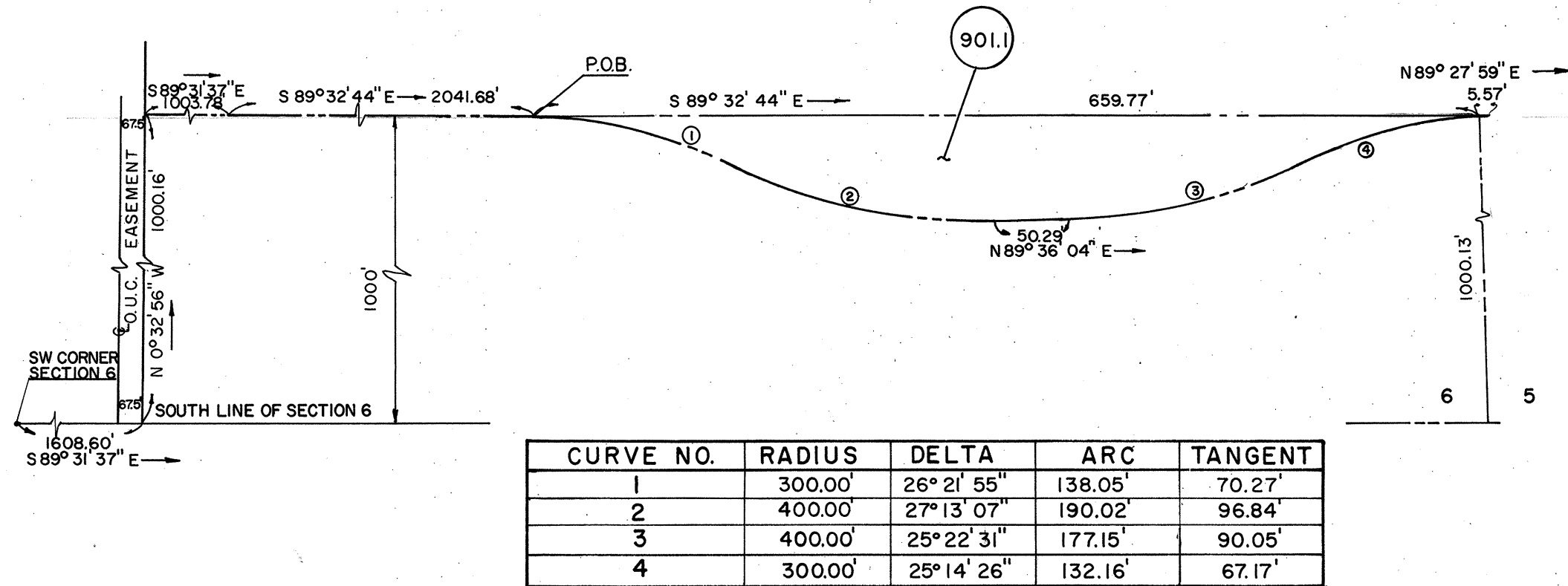
DESCRIPTION
BORROW PIT NO. 2

FROM THE SOUTHWEST CORNER OF SECTION 6, TOWNSHIP 24 SOUTH, RANGE 29 EAST, RUN SOUTH 89 DEGREES 31 MINUTES 37 SECONDS EAST 1608.60 FEET ALONG THE SOUTH BOUNDARY OF THE SOUTHWEST 1/4 OF SAID SECTION 6 TO A POINT ON THE EAST RIGHT OF WAY LINE OF THE ORLANDO UTILITIES COMMISSION TRANSMISSION LINE EASEMENT; THENCE NORTH 00 DEGREES 32 MINUTES 56 SECONDS WEST 1000.16 FEET ALONG SAID EAST RIGHT OF WAY LINE; THENCE SOUTH 89 DEGREES 31 MINUTES 37 SECONDS EAST 1003.78 FEET ALONG A LINE PARALLEL WITH THE AFORESAID SOUTH BOUNDARY OF THE SOUTHWEST 1/4; THENCE SOUTH 89 DEGREES 32 MINUTES 44 SECONDS EAST 2041.66 FEET ALONG A LINE PARALLEL WITH THE SOUTH BOUNDARY OF THE SOUTHWEST 1/4 OF SAID SECTION 6 FOR THE POINT OF BEGINNING; THENCE CONTINUE SOUTH 89 DEGREES 32 MINUTES 44 SECONDS EAST 659.77 FEET; THENCE NORTH 89 DEGREES 27 MINUTES 59 SECONDS EAST 5.57 FEET ALONG A LINE PARALLEL WITH THE SOUTH BOUNDARY OF THE SOUTHWEST 1/4 OF SECTION 5, TOWNSHIP 24 SOUTH, RANGE 29 EAST TO THE BEGINNING OF A CURVE, CONCAVE SOUTHEASTERLY, HAVING A RADIUS OF 300.00 FEET AND AN INTERSECTION ANGLE 25 DEGREES 14 MINUTES 26 SECONDS; RUN THENCE SOUTHWESTERLY 132.16 FEET ALONG THE ARC OF SAID CURVE TO THE BEGINNING OF A REVERSE CURVE, CONCAVE NORTHWESTERLY, HAVING A RADIUS OF 400.00 FEET AND AN INTERSECTION ANGLE OF 25 DEGREES 22 MINUTES 31 SECONDS; RUN THENCE SOUTHWESTERLY 177.15 FEET ALONG THE ARC OF SAID CURVE TO THE END OF SAID CURVE; THENCE SOUTH 89 DEGREES 36 MINUTES 04 SECONDS WEST 50.29 FEET TO THE BEGINNING OF A CURVE, CONCAVE NORTHEASTERLY, HAVING A RADIUS OF 400.00 FEET AND AN INTERSECTION ANGLE OF 27 DEGREES 13 MINUTES 07 SECONDS; RUN THENCE SOUTHWESTERLY 190.02 FEET ALONG THE ARC OF SAID CURVE TO THE BEGINNING OF A REVERSE CURVE, CONCAVE SOUTHWESTERLY, HAVING A RADIUS OF 300.00 FEET AND AN INTERSECTION ANGLE OF 26 DEGREES 21 MINUTES 55 SECONDS; RUN THENCE NORTHWESTERLY 138.05 FEET ALONG THE ARC OF SAID CURVE TO THE POINT OF BEGINNING.

CONTAINING 0.6250 ACRES.
GRANTOR: ORLANDO CENTRAL PARK, INC.

TWP 24 S.
RG. 29 E.

SCALE 1"=100'



CURVE NO.	RADIUS	DELTA	ARC	TANGENT
1	300.00'	26°21'55"	138.05'	70.27'
2	400.00'	27°13'07"	190.02'	96.84'
3	400.00'	25°22'31"	177.15'	90.05'
4	300.00'	25°14'26"	132.16'	67.17'

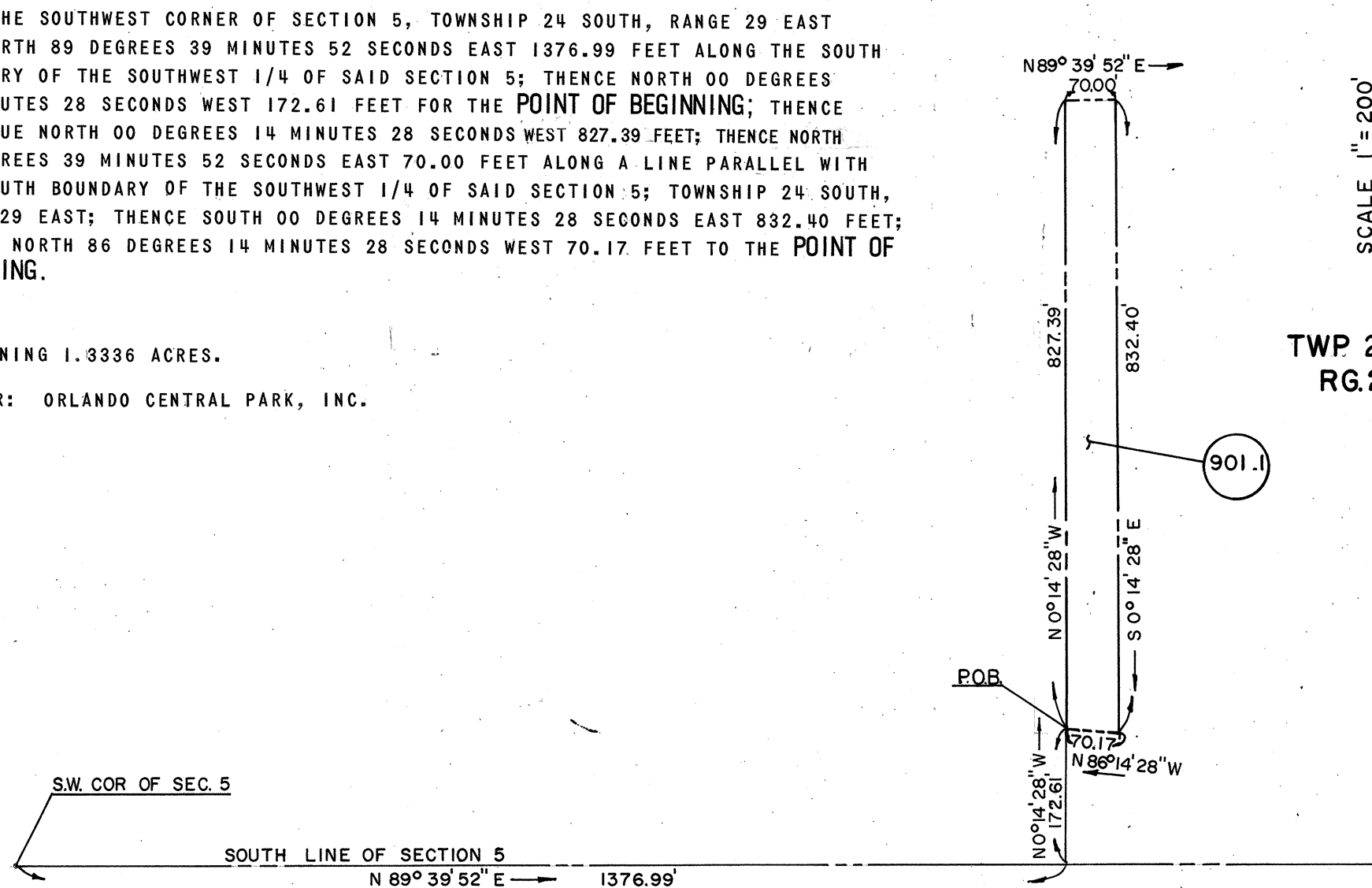
DESCRIPTION
BORROW PIT NO. 3

FROM THE SOUTHWEST CORNER OF SECTION 5, TOWNSHIP 24 SOUTH, RANGE 29 EAST RUN NORTH 89 DEGREES 39 MINUTES 52 SECONDS EAST 1376.99 FEET ALONG THE SOUTH BOUNDARY OF THE SOUTHWEST 1/4 OF SAID SECTION 5; THENCE NORTH 00 DEGREES 14 MINUTES 28 SECONDS WEST 172.61 FEET FOR THE POINT OF BEGINNING; THENCE CONTINUE NORTH 00 DEGREES 14 MINUTES 28 SECONDS WEST 827.39 FEET; THENCE NORTH 89 DEGREES 39 MINUTES 52 SECONDS EAST 70.00 FEET ALONG A LINE PARALLEL WITH THE SOUTH BOUNDARY OF THE SOUTHWEST 1/4 OF SAID SECTION 5; TOWNSHIP 24 SOUTH, RANGE 29 EAST; THENCE SOUTH 00 DEGREES 14 MINUTES 28 SECONDS EAST 832.40 FEET; THENCE NORTH 86 DEGREES 14 MINUTES 28 SECONDS WEST 70.17 FEET TO THE POINT OF BEGINNING.

CONTAINING 1.3336 ACRES.
GRANTOR: ORLANDO CENTRAL PARK, INC.

TWP 24 S.
RG. 29 E.

SCALE 1"=200'



I Added Sheet 10		J.E.G. F.J.R. 7-10-72	
NO.	REVISION	BY	DATE
STATE OF FLORIDA DEPARTMENT OF TRANSPORTATION INTERSTATE 4-BEE LINE CONNECTOR			
BORROW PIT EASEMENTS			
W. K. DAUGHERTY CONSULTING ENGINEERS SECTION ENGINEERS J. E. GREINER COMPANY			
MADE F.J.R.	DATE 7-10-72	TRACED F.J.R.	DATE 7-10-72
CHECKED J.E.A.	DATE 7-10-72		
Sec. 75004-2502		Sh. 10	

ORANGE COUNTY, FLORIDA